

When telephoning, please ask for: Laura Webb
Direct dial 0115 914 8481
Email constitutionalservices@rushcliffe.gov.uk

Our reference:
Your reference:
Date: Monday, 18 February 2019



To all Members of the Community Development Group

Dear Councillor

AGENDA SUPPLEMENT

Please note the attached documents below for the meeting of the Community Development Group to be held on Tuesday, 26 February 2019, the agenda for which has already been published.

Yours sincerely

A handwritten signature in black ink, appearing to read 'S Sull'.

Sanjit Sull
Monitoring Officer

AGENDA

4. Report on Diversity in Rushcliffe - Focus on Dementia (Pages 1 - 10)

Membership

Chairman: Councillor T Combellack
Vice-Chairman: Councillor R Inglis
Councillors: B Buschman, B Cooper, J Donoghue, M Edwards, J Greenwood, K Khan and F Purdue-Horan

**Rushcliffe Community
Contact Centre**
Rectory Road
West Bridgford
Nottingham
NG2 6BU

In person
Monday to Friday
8.30am - 5pm
First Saturday of
each month
9am - 1pm

By telephone
Monday to Friday
8.30am - 5pm

Telephone:
0115 981 9911

Email:
customerservices@rushcliffe.gov.uk

www.rushcliffe.gov.uk

Postal address
Rushcliffe Borough
Council
Rushcliffe Arena
Rugby Road
West Bridgford
Nottingham
NG2 7YG



Meeting Room Guidance

Fire Alarm Evacuation: in the event of an alarm sounding please evacuate the building using the nearest fire exit, normally through the Council Chamber. You should assemble at the far side of the plaza outside the main entrance to the building.

Toilets: are located to the rear of the building near the lift and stairs to the first floor.

Mobile Phones: For the benefit of others please ensure that your mobile phone is switched off whilst you are in the meeting.

Microphones: When you are invited to speak please press the button on your microphone, a red light will appear on the stem. Please ensure that you switch this off after you have spoken.

Recording at Meetings

The Openness of Local Government Bodies Regulations 2014 allows filming and recording by anyone attending a meeting. This is not within the Council's control.

Rushcliffe Borough Council is committed to being open and transparent in its decision making. As such, the Council will undertake audio recording of meetings which are open to the public, except where it is resolved that the public be excluded, as the information being discussed is confidential or otherwise exempt.



Rushcliffe Community
Contact Centre

Rectory Road
West Bridgford
Nottingham
NG2 6BU

In person

Monday to Friday
8.30am - 5pm
First Saturday of
each month
9am - 1pm

By telephone

Monday to Friday
8.30am - 5pm

Telephone:

0115 981 9911

Email:

customerservices
@rushcliffe.gov.uk

www.rushcliffe.gov.uk

Postal address

Rushcliffe Borough
Council
Rushcliffe Arena
Rugby Road
West Bridgford
Nottingham
NG2 7YG





Rushcliffe
Borough Council



Rushcliffe Borough Council

Diversity of Rushcliffe – Focus on Dementia

Community Development Scrutiny Group
Derek Hayden & Alex Julian



RUSHCLIFFE - GREAT PLACE • GREAT LIFESTYLE • GREAT SPORT



What makes us healthy?

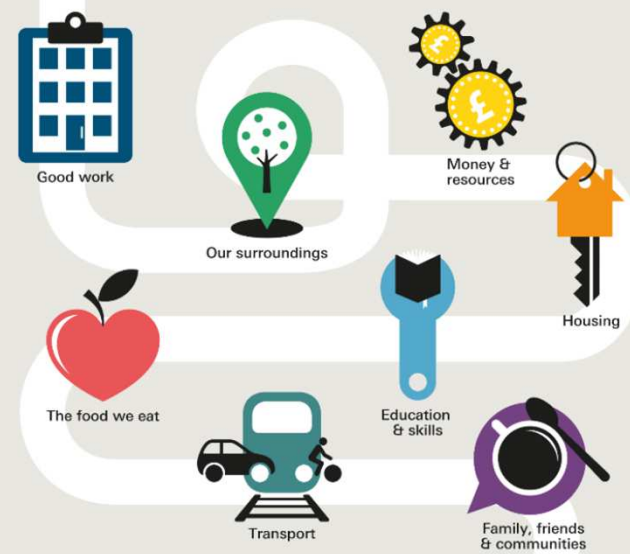
Our health, wellbeing and ultimately life expectancy is determined by..

page 2

What makes us healthy?

AS LITTLE AS **10%** of a population's health and wellbeing is linked to access to health care.

We need to look at the bigger picture:



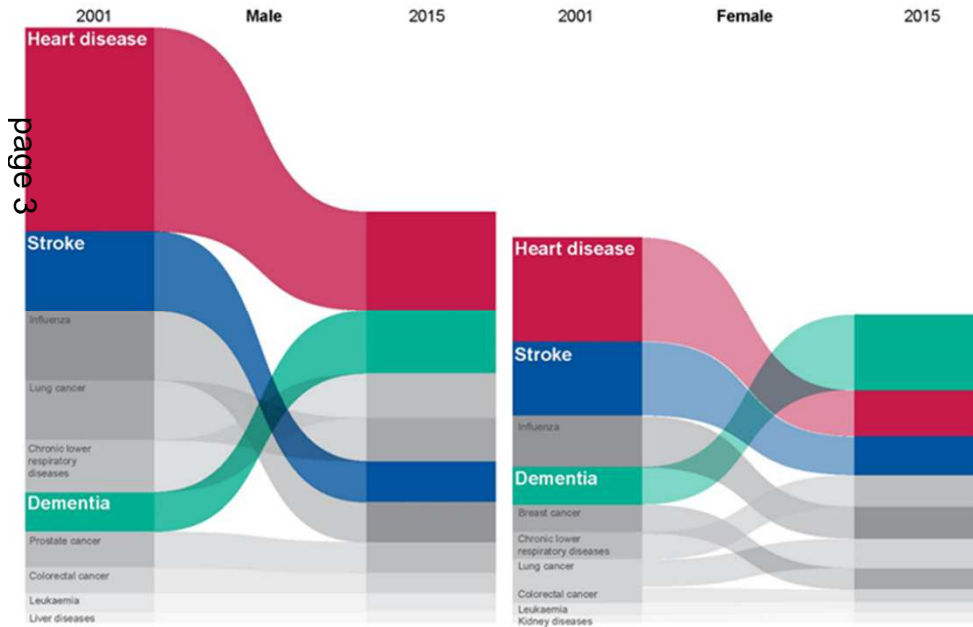
But the picture isn't the same for everyone.

The healthy life expectancy gap between the most and least deprived areas in the UK is: **19** YEARS

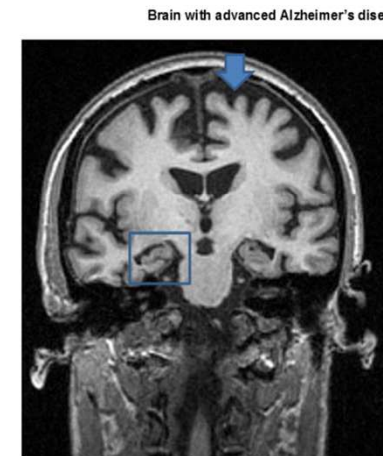
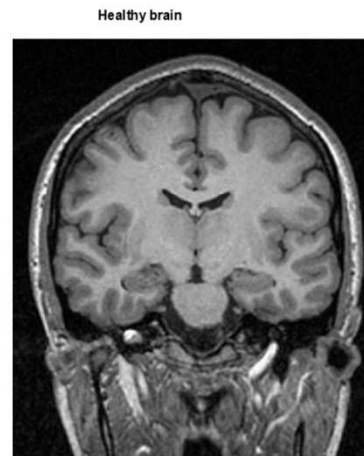
As a Local Authority we have a significant part to play in addressing these determinants and ensuring equitable access to our services.



Context



Dementia Friendly General Practice Information and Awareness Session



Reference: Carer Information and Support Programme, Facilitator's Slides, Alzheimer's Society



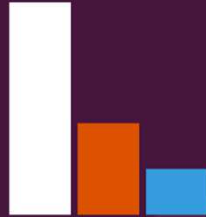


Dementia in the UK




page 4

One million



people in the UK will have dementia by 2025 and this will increase to two million by 2050.

Dementia has **higher health and social care costs** (£11.9bn) than cancer (£5.0bn) and chronic heart disease (£2.5bn) combined.

The numbers of people with dementia are predicted to rise up to 35% by 2025 and 146% by 2050.

£26bn

The current cost of dementia in the UK.






Dementia in Rushcliffe

- 1% of Rushcliffe residents (1160)
- 5% of Rushcliffe residents 65+
- 1760 residents with dementia

page 5

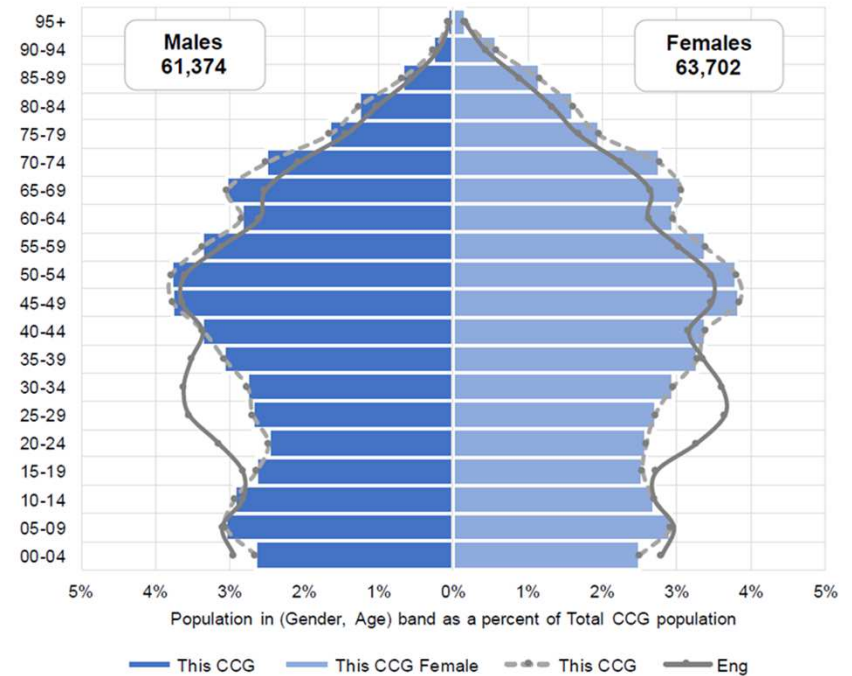


Figure 1: Population pyramid for Rushcliffe (NHS Digital, 2016)



What we've done

- Delivered 15 GP specific Dementia Friends sessions to Rushcliffe practices.
- Delivered 5 Dementia Friends sessions to local community groups.
- Delivered the Rushcliffe Memory Walk at Rushcliffe Country Park raising over £3000
- Delivered Dementia Friends Session to the Leadership Forum, Councillors and Leisure Centre staff
- Supported Cotgrave Leisure Centre to set up Dementia Friendly Swimming
- The authority has connected with local Dementia Café's to understand their challenges and seek feedback regarding Council services.



Dementia Action

page 7



Dementia Friendly Swimming

Join us for a sessions at:

Cotgrave Leisure Centre
Wednesday's 1pm - 3pm
Starting from the 7th November 2018

Rushcliffe Memory Walk
Saturday 20th October, 2018
Rushcliffe Country Park, Mere Way, Ruddington, Nottingham, NG11 6JS
 Gates open 12.30pm - Walk start time 2pm

Rushcliffe Clinical Commissioning Group, PartnersHealth (Rushcliffe GP Practices) and Rushcliffe Borough Council have partnered with Alzheimer's Society to organise a charity walk to raise awareness of those living with dementia. You will be able to choose between a 2km and a 5km walk supported by friendly staff and stewards (wheel chairs are also suitable for this event). There will be tea/coffee and cakes for sale with all donations going to the Alzheimers Society to support vital research.

Please join us - Every single step will help change the lives of people affected by Dementia, now and in the future.

For more information or registration form, please contact Lisa Harrold on 0115 8837816. Please either complete and return the registration form to your GP practice or register on-line via Eventbrite <https://www.eventbrite.com/e/rushcliffe-memory-walk-tickets-452010921673>

PartnersHealth STRONGER TOGETHER | NHS Rushcliffe Clinical Commissioning Group | Rushcliffe Borough Council





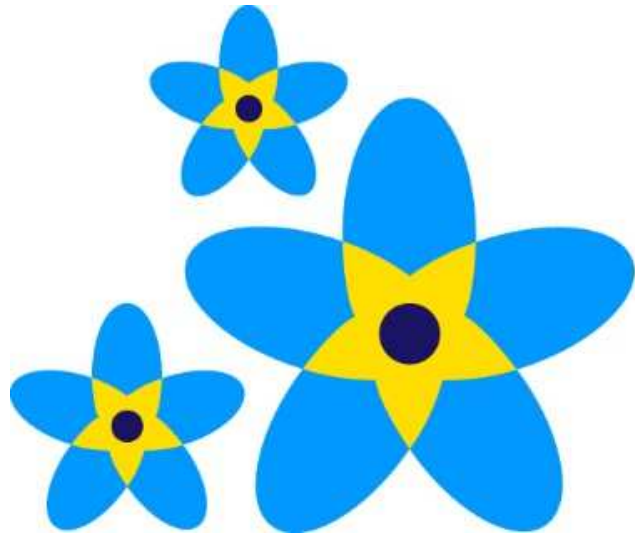
What we plan to do

- Delivery of Dementia Action Event during Dementia Action Week – Friday 24th May 2019
- Multi-agency event involving Alzheimer’s Society, Rushcliffe CCG, Notts County Council, Gedling Borough Council, Institute of Mental Health, University of Nottingham, Notts Police, Notts Fire & Rescue, Dementia Café volunteers, carer’s and service users.
- Delivery of a dementia friendly group at a local eco farm, providing opportunities for residents with dementia to engage in animal therapy, support an allotment and provide respite for carers.
- Exploring opportunity to implement care home games involving adapted physical activity sessions led by care home staff – to support the elderly to get active. ENGAGE



Accredited as...

page 9



Working to become
**Dementia
Friendly**
2018-2019



Dementia Friendly

Empowering people with dementia to have high aspirations, confidence and know they can contribute

